

School Features:

10 Computer Labs
 34 Laptop Computer Carts
 Career Lab
 Dance Studio
 1,025 Seat State-of-the-Art Theater
 5,000 Seat Football Stadium
 Wrestling Room
 Construction Shop
 2 Drafting Labs
 Performance-Based Diploma Lab
 Media Center- State of the Art Media Collection
 Weight Room
 Culinary Arts Industrial Kitchen
 1,500 Seat Gymnasium
 Photography Darkroom
 Ceramics Studio and Kilns
 Electronic Piano Lab
 16 Science Labs
 Indoor/Outdoor Café

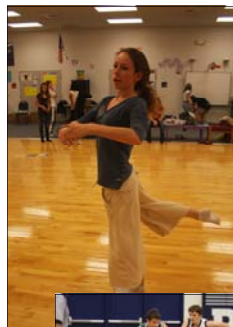


Advanced Placement and Dual Enrollment classes are offered for high school and college credit to students at no cost to the student. Applicants must qualify with an appropriate SAT, ACT or College Placement Test (CPT) score.

Since 2007, the number of dual enrollment seats have more than tripled from 176 to 618.

Student Life and Organizations

Academic Olympic Team Art Club Concert Band
 Drum Bugle Corps Jazz Band Symphony Orchestra
 Symphonic Band Wind Ensemble
 Bobcat Sentinel Newspaper Book Club Chorus
 Vocal Ensemble Fellowship of Christian Athletes
 Future Business Leaders of America Fishing & Scuba Club
 History Fair Competition Interact Club Key Club
 Legend Yearbook Mu Alpha Theta (Math Honor Society)
 National Honor Society National Honor Society for Dance
 Naval Junior Reserve Officer Training Corps (NJROTC)
 R.E.A.C.H Health Career Club Schools for Schools
 Latin Dancers Speech & Debate Student Government
 Students Working Against Tobacco (S.W.A.T.) Teens for Change
 Thespians Technology Student Association World Language Club
 Step Team Bobcast TV Production Kaleidoscope
 Drama productions Animation Club Executive Internships
 Link Crew Students Against Hunger Chess Club



Varsity Sports

Football
 Volleyball
 Cross Country
CHEERLEADING
 Golf
Tennis
 Basketball
Baseball
 SOFTBALL
Wrestling
 Weightlifting
 Swimming
 Track and Field
Soccer

North Port High School

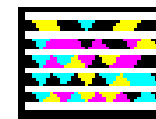


"Inspiring Tomorrow's Leaders"

Programs and Opportunities for New Students



6400 West Price Blvd.
 North Port, Florida 34291
 Tel 941.423.8558
 Fax 941.480.3199
www.sarasotacountyschools/nphs



Scan using your Microsoft Tag Application to view YouTube commercial

North Port High School Collegiate Academy

The North Port High School Collegiate Academy is an educational opportunity for NPHS students to earn up to two years of college credit while simultaneously earning a high school diploma from North Port High School. During this accelerated college program, high school sophomores, juniors, and seniors will take Dual Enrollment and/or Advanced Placement courses on the North Port High School campus. These courses will satisfy the requirements for both the high school diploma and freshman and sophomore years of college.

AP Psychology AP English Language **AP British Literature** AP Music Theory AP Biology **AP Chemistry** AP Calculus AB AP Calculus BC AP Environmental Science **AP FRENCH** AP Art- Drawing **AP Art History** AP Spanish AP Art- Studio AP American Government **AP World History DE College Algebra MAC-1105 DE English Communication MAC-1101 DE English Communication MAC-1102 DE English Literature ENC-2012 DE English Literature ENC-2023 DE Humanities HUM-2230 DE Humanities HUM-2250 DE Trigonometry MAC-1114 DE Pre Calculus MAC-1140 DE Statistics STA-2023 DE United States History I AMH 1010 DE United States History II AMH 1020 DE Biology BSC 1007C**



STEM Grant

(Science, Technology, Engineering, Mathematics)

North Port High School is fortunate to participate in a multi-year grant with the Gulf-coast Community Foundation of Venice to emphasize Science, Technology, Engineering and Math at the school. Two programs that will develop from this grant are an engineering academy (fall 2011) and a medical academy (fall 2012). Students at the school will benefit from additional equipment and resources designed to identify student talent and to emphasize high achievement in math and science coursework.



Graduates Class of 2009

70% attended post-secondary schooling
6% Military

Teachers at North Port High School

Advanced degree beyond Bachelors Degree 62%
6 or more years of teaching experience 55%

North Port Students Have Attended These Colleges

Albany University Arkansas State Art Institute of New York Art Institute of Pittsburgh Auburn University Barry University Berklee College of Music Bethune-Cookman University Boston University Brigham Young University Citadel Military College Cleveland State University College of William and Mary Cumberland University Duke University East Tennessee State University Embry-Riddle Flagler College Florida A&M University Florida Atlantic University Florida Gulf Coast University Florida International University Florida Southern College FLORIDA STATE UNIVERSITY Full Sail Georgia Institute of Technology Georgia Military College Howard University Johns Hopkins University Johnson & Whales Middle Tennessee State University North Carolina State North Carolina Wesleyan College Northwestern University Nova Southeastern Ohio State University Penn State University Ringling College ROLLINS COLLEGE Rutgers University Salem College Seton Hall University Spellman College St. Leo University Stetson University TROY UNIVERSITY Tuskegee University University of Central Florida University of Florida University of Hawaii at Monoa University of Kentucky University of Massachusetts University of Miami University of Missouri University of Montana University of North Florida University of San Francisco University of South Florida University of Tampa University of West Florida Wabash College Webber International University Wellesley College West Virginia University

